



# **POCKET GUIDE**

## FEBRUARY 2026

An Introduction to Our  
Latest Innovations

**biamp** | 50

# WE WORK FOR YOU

---

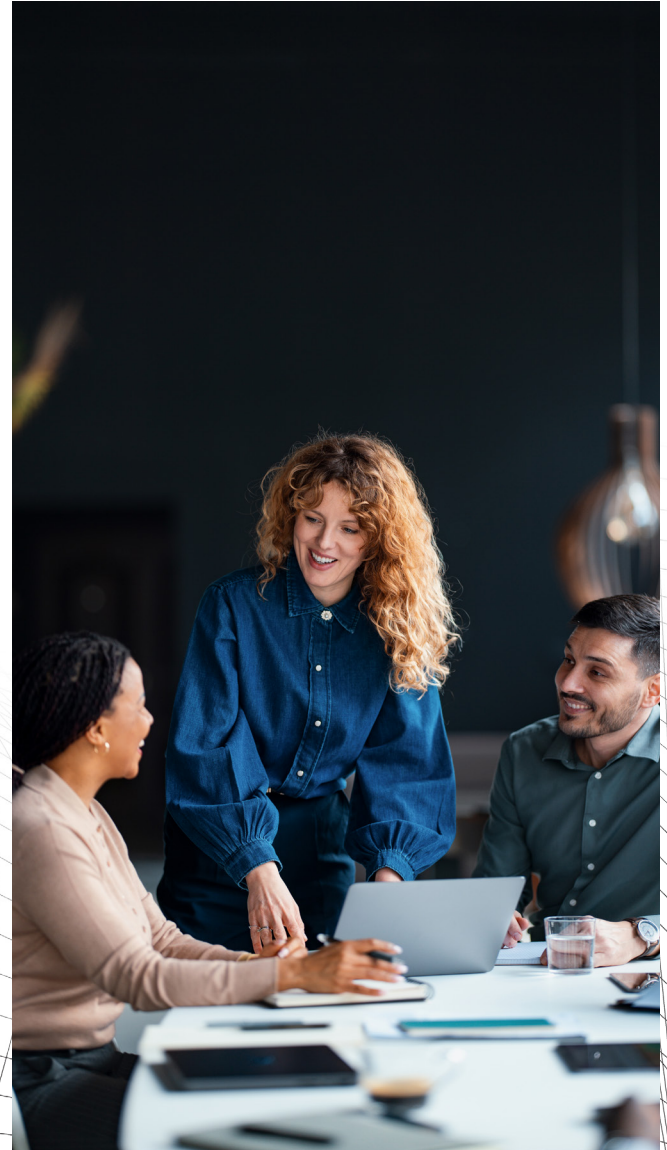
For 50 years, Biamp has been more than a technology company. We've been a community of audiovisual professionals united by passion and purpose, driven to make communication effortless and connection unforgettable.

Today, Biamp spans dimensions that reach far beyond products alone. Our solutions don't just fill rooms — they bring spaces to life and amplify human potential.

While inspired by our past successes, today our story is about where we're going.

As technology, workplaces, and human interaction continue to evolve, Biamp is shaping what comes next — building audiovisual systems that think smarter, connect deeper, and perform better than ever before.

And as we embark on our next 50 years, our mission remains the same: We work for you.



# BIAMP WORKPLACE

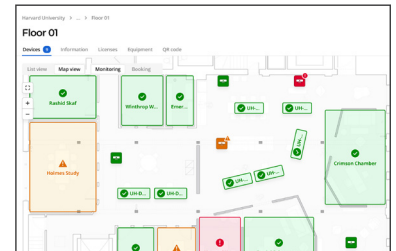
With Biamp Workplace, the future of AV systems management is now at your fingertips. For both managers and end users of AV and conferencing equipment, this unprecedented cloud-based platform makes the most extraordinary audiovisual experiences come to life in any professional environment.

Biamp Workplace helps you take full command of your entire AV system, enabling centralized, system-wide monitoring, management, scheduling, reporting, and actionable insights across an extensive and ever-expanding array of industry-leading Biamp technologies.



## KEY FEATURES:

- **NEW:** Enhanced Floor Plan View features added facilities for improved navigation and a more streamlined booking experience, plus new tools for expediting resource diagramming on any floor plan.
- **NEW:** My Workplace enables Biamp Workplace users to quickly learn and practice using new features with no risk of impacting live environments.
- The Workplace Bridge makes older Tesira DSP products compatible with the many features and benefits of Biamp Workplace.
- Proactive monitoring lets you anticipate potential issues before they arise, with automated alerts, system health check, and device status tracking.
- Remote management, firmware updates, and device reboots reduce on-site interventions.
- Easily access essential device information at a glance, including online status, model and description, firmware version, serial number, and IP address.
- Data-driven, actionable insights to optimize system performance, including utilization by location, time of day, room style, type of equipment, and more.
- Remote Launch allows users to automatically optimize a room before a big meeting, or schedule it to happen every Sunday before people arrive at the office.
- The highest security standards, including end-to-end encryption, secure data storage, and continuous monitoring, ensure all sensitive information stays protected.



# WORKPLACE TOOLS

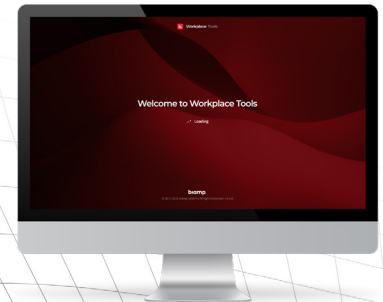
Workplace Tools is a unified desktop application for AV system installers and technicians that brings together local deployment and cloud-enabled lifecycle management in a single, streamlined workflow. Evolving from Workplace Connect and the Workplace Tools mobile app, it provides a consistent way to discover, configure, and manage all Biamp Workplace-ready devices—whether working offline in secure, air-gapped environments, or connecting systems to the cloud for ongoing monitoring and remote support.

As an extension of the Biamp Workplace ecosystem, Workplace Tools simplifies deployment, accelerates setup, and lays the foundation for scalable, future-ready room management..



## KEY FEATURES:

- Discover, configure, and troubleshoot devices on the local network with no login or cloud connection required.
- Assign devices to organizations and locations and enable secure remote management with role-based access control.
- Manage firmware from a single interface with options for local, offline, or cloud-based updates.
- Configure EasyConnect MPX 250 network, switch, and UC system settings directly within the application.
- Access a built-in AI agent for instant answers from the Biamp Knowledge Base with contextual documentation links.
- Deliver a single, consistent workflow across all Biamp Workplace-ready devices for faster, more reliable deployments.
- Securely assign devices to organizations and locations with role-based access control and offline ownership protection.
- Prepare and configure devices before deployment, then connect to the cloud when ready for remote management.
- Access contextual, in-app guidance with a built-in AI agent that links directly to Biamp documentation and release notes.

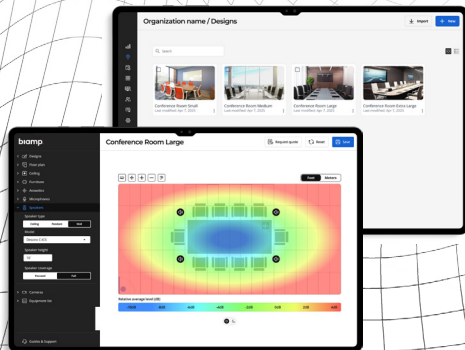


## WORKPLACE DESIGNER

Workplace Designer is a fundamental shift in how we approach the entire process of design-to-deployment, moving from standalone tools to fully cloud-based integration with the Workplace ecosystem, accessible anytime. Workplace Designer offers the features and performance that users love from Conference Room Designer — just enter a few simple pieces of information about your space and this tool provides a complete room design — and adds powerful new Workplace capabilities.

### KEY FEATURES:

- **NEW:** Workplace Designer now includes the Parlé VBC 2800 and CBC 2500 conferencing bars; the Vidi 280 conferencing camera; the Desono C-IC6, C-IC6LP, PS-SM, ENT-206, EX-S8, and MASK6C loudspeakers; as well as 4 UC compute bundles.
- All designs stored in Workplace, available throughout lifecycle and linked to your organizations, buildings, rooms, etc.
- File management makes it easy to associate design files with locations and share to multiple locations.



## WORKPLACE COMMAND

Workplace Command enables AV technicians to access block functions of any Workplace-connected Tesira device remotely from within the Workplace app using a simple and intuitive interface. This eliminates the need for on-site visits to troubleshoot simple issues, such as un-muting audio in a presentation space or confirming the proper sources are selected, with no programming required.

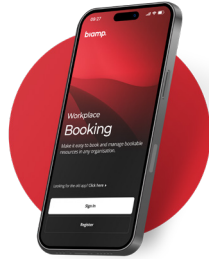
All the information from a Tesira block can be automatically provided from the cloud, with no additional programming. Workplace Command integrates directly with Biamp Workplace, creating a unified ecosystem for managing AV environments, accessible anywhere from any device.

### KEY FEATURES:

- **NEW:** Qt X Zone Control within Workplace Command transforms Qt X sound masking from a monitoring-only system into a dynamic acoustic management platform. Users can make numerous real-time adjustments with immediate visual feedback—all without costly site visits.
- Remote commands for Tesira systems, from anywhere at any time.
- Troubleshoot system issues remotely.
- Manage multiple locations from a single dashboard.
- Provides proactive tuning before problems escalate.

## WORKPLACE BOOKING APP

A powerful component of the Biamp Workplace ecosystem, the Workplace Booking App makes it fast and easy for users to book rooms, desks, parking places, or any other shared space, delivering real-time availability and seamless calendar integration for a smooth and efficient booking experience every time, from anywhere.



### KEY FEATURES:

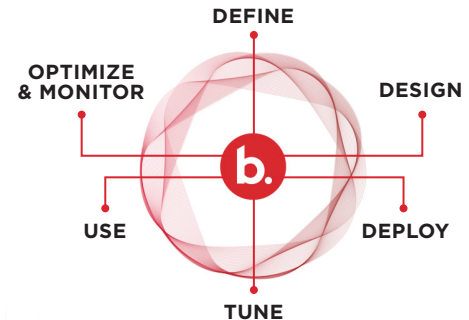
- The intuitive floorplan view provides an easy method for quickly viewing which rooms, shared desks, and parking spaces are available.
- With the Workplace bookings tool, admins have insight into all meeting room availability for easy scheduling in support of numerous staff members.
- Filter room availability searches based on seating capacity and AV capabilities.
- Synchronize with Microsoft Outlook or Google Calendar.
- The intuitive home screen provides a clear overview of room and desk bookings.
- Receive data-based insights to help optimize workplace resource usage.
- Seamlessly integrated with Evoko Naso room manager and Kleo desk manager.

## WORKPLACE STATUS PAGE

Stay informed with complete confidence. The Workplace Status Page delivers transparent, real-time visibility into the health of the Biamp Workplace platform—so IT, AV, and facilities teams always know what’s happening and what to expect. Whether monitoring scheduled maintenance or staying ahead of active incidents, the new public status page helps ensure smooth operations and faster decision-making across every deployment.

### KEY FEATURES:

- View real-time platform status, maintenance activity, and incident updates to stay proactive and reduce downtime.
- Access a public, shareable URL that can be bookmarked, referenced, and distributed across your organization.
- Subscribe to automated notifications to stay informed about important updates that could impact your systems.



## PARLÉ PRESENTER LIFT



Parlé Presenter Lift eliminates the challenges of traditional handheld or lapel presenter mics, delivering the presenter's voice at a conversational level in presentation spaces of all sizes, such as classrooms and training rooms, as they move around on a stage — no lavalier or over-the-ear microphone required. This makes it easy to switch presenters, since there are no microphones to hand off, and it works at a moment's notice — no complicated event setup or audio production after initial installation. Parlé Presenter Lift is enabled by precise aiming of Parlé ceiling microphone audio beams to better control sound pickup, paired with improved feedback suppression inside Tesira digital signal processors (DSPs).

### KEY FEATURES:

- Parlé Beam Locking settings adjust Parlé microphone beams to focus exclusively on the presentation audio.
- Frequency Shift Feedback Suppressor eliminates feedback.
- Presentation Space Designer makes it easy to design presentation spaces with ideal microphone placement and beam aiming settings.
- Eliminates manual microphone management—no handheld, body-worn, or podium mics required.

## PARLÉ PARTICIPANT LIFT

Parlé Participant Lift enables natural, hands-free voice amplification for participants in larger meeting and presentation spaces—ensuring every voice is heard clearly using the flexibility of ceiling microphones. Built on proven Parlé microphones and Tesira mix minus voice lift DSP technology, it delivers consistent audio output across all seating positions while reducing system complexity and operational overhead. Plus, automated configuration and centralized design tools simplify deployment.

### KEY FEATURES:

- Hands-free participant amplification delivers clear, natural voice lift throughout large spaces without operator intervention.
- Improves engagement and intelligibility across all seating positions.
- Automated configuration through the new Tesira Dynamic Processing Library.
- Streamlined design process using the new Parlé Participant Lift tool to automatically determine appropriate level settings within the room.
- Simplified deployment using the new mixer settings import function for Parlé Participant Lift in Tesira.

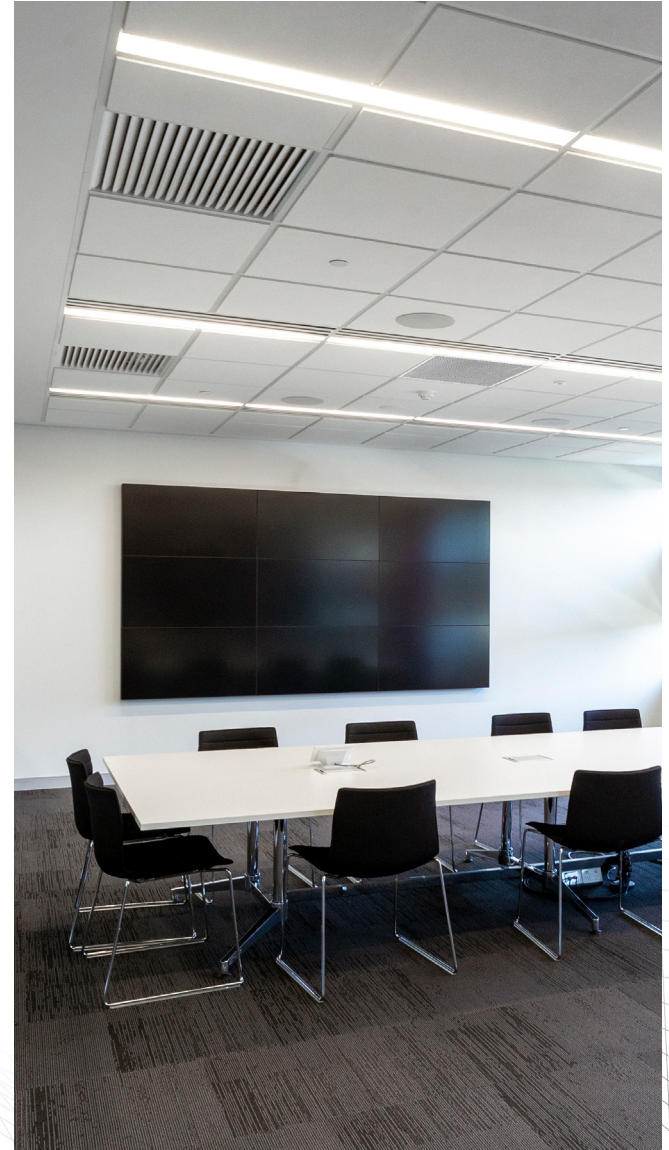


# BIAMP BMA 360D CEILING TILE MICROPHONE

The BMA 360D is a next-generation ceiling tile microphone array designed to work with any Tesira DSP systems using Dante®. It delivers pure, unprocessed beam audio on individual Dante channels. With consistent beam shape across the entire voice frequency range, the BMA 360D ensures natural, full-fidelity pickup in rooms of any size or configuration. Built-in power amplifiers and versatile mounting options make it easy to deploy in modern collaboration spaces and beyond, while maintaining premium performance for conferencing, camera tracking, and voice lift applications.

## KEY FEATURES:

- Dante-enabled beam audio — Individual transmit channels for each beam plus a smart-switched output.
- Ultra-wideband, frequency-invariant beamforming for consistent gain response and natural speech across all beams.
- Adaptive steering + preset or custom beam patterns for precise coverage across a wide range of room layouts via the Biamp BMA Configuration software.
- Exceptional performance with voice lift, camera tracking, and DSP-based room automation.
- Integrated power amplification — Configurable 4 × 15 W or 2 × 30 W outputs.
- Flexible mounting options — Fits 24 in and 600 mm ceiling grids; includes VESA pattern and hard-ceiling adapter compatibility.



# PARLÉ VBC 2800 CONFERRNCING BAR

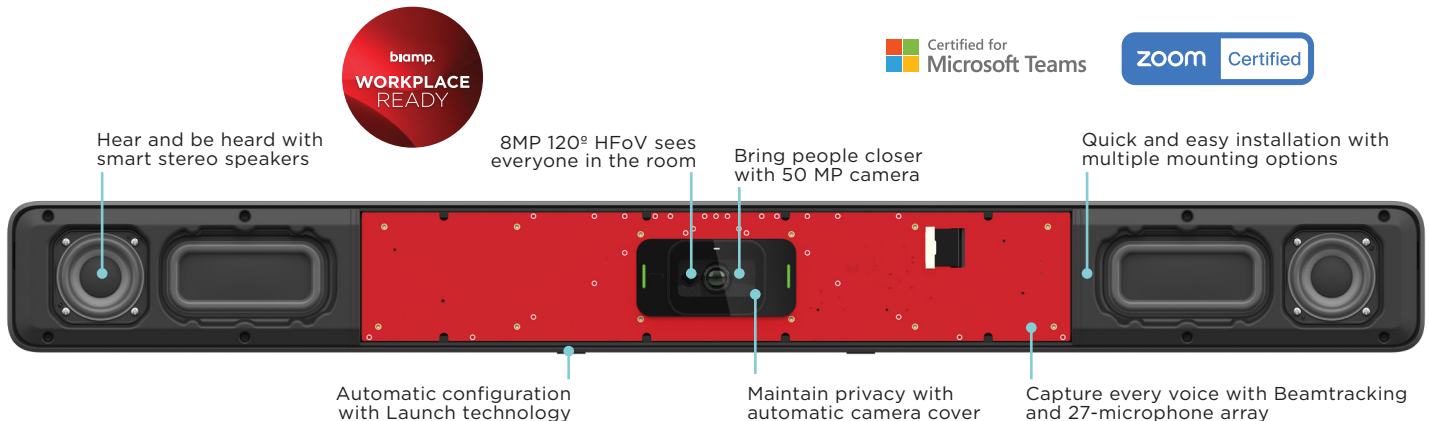
The Parlé™ VBC 2800 is an all-in-one conferencing bar, certified for Microsoft Teams Rooms and Zoom Rooms, that features Biamp Audio Intelligence and Biamp Video Intelligence that delivers high performance AV experiences across all meeting spaces up to and including large conference rooms.

The VBC 2800 features a new dual 50 MP + 8 MP ePTZ camera system that clearly sees everyone, even further down long conference tables. The ePTZ system also features up to 16x digital zoom, and AI auto framing technology automatically switches between telephoto and wide-angle cameras for the best shot. With integrated Acoustic Echo Cancellation (AEC) and AI Noise Reduction, the VBC 2800 uses a 27-microphone array and Biamp Beamtracking™ technology to actively track and intelligently mix conversations from around the room.

Equipped with Biamp Launch™, The VBC 2800 analyzes the room's acoustic performance and then optimizes the bar for extraordinary audio to adjust for the room's unique specifications.

## KEY FEATURES:

- **NEW:** Certification for Microsoft Teams Rooms further expands collaboration flexibility.
- People Gallery Tiles, our AI-powered video intelligence solution, automatically detects and frames each in-room participant as an individual tile, enabling remote attendees to see everyone clearly.
- 802.1X network security support enables secure connection to enterprise networks that require 802.1X authentication and allows connection to Biamp Workplace.
- Beamtracking technology uses a 27-microphone array to actively track and intelligently mix conversations.
- AI noise reduction algorithm for clear voice reproduction.
- Biamp Launch for one touch automatic tuning.
- ePTZ camera with 16x digital zoom and 120-degree field of view.
- Network port for control integration.
- Analog audio input for playing local in-room content.
- Discrete output for Assistive Listening Systems.
- Zoom certified.



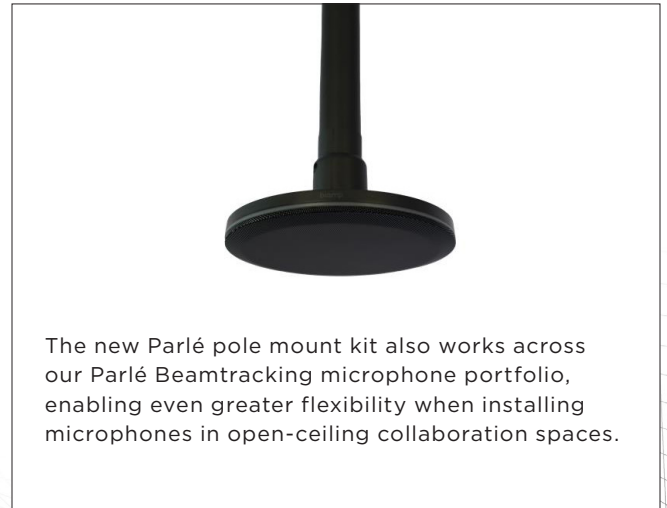
# PARLÉ CBC 2500

The Parlé CBC 2500 CM is a ceiling or pole mounted, all-in-one conferencing bar for collaboration spaces where wall mounting might be difficult, such as open ceiling environments. Featuring a sleek design that mounts from any open plan ceiling or support pole with two discreet cables, the CBC 2500 is quickly and cleanly installed with two mounting points and decorative covers.



## KEY FEATURES:

- The Parlé pole mount kit provides another option for easy, attractive installation.
- Certified for Microsoft Teams and Zoom.
- Beamtracking technology actively tracks and intelligently mixes conversations AI noise reduction algorithm for clear voice reproduction.
- Biamp Launch for one touch automatic tuning that delivers the best sound in every room.
- Low distortion, smart stereo speakers.
- AI noise reduction algorithm for clear voice reproduction.



# VIDI 280 CONFERENCE CAMERA

The Vidi™ 280 is a stand-alone conferencing camera, ideal across all meeting spaces up to and including large rooms, that easily connects to room experience systems like UC computes or BYOM hubs via USB-C. The Vidi 280 features a dual 50 MP + 8 MP ePTZ camera system that can see everyone in large conference rooms, capturing crisp detail at farther distances. With AI auto framing technology that automatically switches between telephoto and wide-angle cameras for the best shot, the ePTZ system also features up to 16x digital zoom.

## KEY FEATURES:

- People Gallery Tiles, our AI-powered video intelligence solution, automatically detects and frames each in-room participant as an individual tile, enabling remote attendees to see everyone clearly.
- 4K, fully digital pan / tilt / zoom (ePTZ) with 16x zoom and 120-degree field of view.
- AI auto framing technology supports meeting spaces up to and including large rooms.
- Activity and privacy state LED indicator.
- 5 element microphone array.
- USB 3.0 powered USB-C connector, cable included.
- Top of display and under display mounts included.
- Certified for Microsoft Teams and Zoom.



# VIDI CONTENT CAM 250



The Vidi Content Cam 250 transforms whiteboard sessions into seamless hybrid experiences, ensuring everyone clearly sees the presented content—whether they're in the room or joining remotely. This specialized 4K camera captures and digitizes whiteboard content with exceptional clarity, making hybrid collaboration truly equitable. The Vidi Content Cam 250 offers a sleek, attractive design and a variety of mounting options that make it effective for whiteboards ranging from a standard 6 feet wide all the way up to very large 12 foot whiteboards.

Designed specifically for the Microsoft Teams Room Content Camera feature, the Vidi Content Cam 250 delivers crystal-clear whiteboard sharing with automatic keystone correction and translucent layering technology, enabling remote participants to see content clearly even when presenters are writing on the board.

## KEY FEATURES:

- Multiple mounting options to accommodate any space:
  - Wall mounting for 6-foot whiteboards.
  - Wall mounting with extension arm for up to 8-foot whiteboards.
  - Ceiling mounting for up to 12-foot whiteboards.
- 50-foot USB extension cable included for flexible installation.
- Optional TB-1 tile bridge accessory for suspended ceiling installations.
- Seamless integration with any MTR system, including the Biamp UCC Teams Room.

# TESIRA

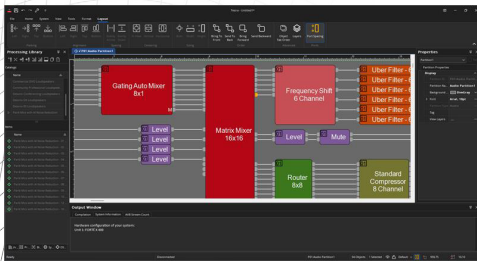


Our flagship platform, Tesira is the leading integrated networked AV processing and distribution solution. Sophisticated, adaptive DSP is the core of what Biamp does, and Tesira delivers total flexibility and scalability to optimize any AV space across any venue.

With a team dedicated to Tesira improvements through software and firmware updates, new features are being developed and delivered regularly, solving more customer needs, faster.

## NEW:

In addition to a new user interface that greatly simplifies navigation, the upcoming Tesira 5.5 update will deliver significant advancements in convenience, efficiency, and system design time. Tesira 5.5 enables quick drag-and-drop of port spacing assignments on processing blocks, which greatly accelerates the creation of more attractive, easier-to-understand system layouts. There is also a new, customizable Quick Access Toolbar that allows users to easily access a variety of tools and objects.



# CONFERENCE ROOM BUNDLES



Transform your conference rooms and optimize collaboration with our expanded lineup of all-in-one AV bundles. Each pre-configured solution is certified for Microsoft Teams Rooms and Zoom, and includes renowned Biamp digital signal processing; Beamtracking microphones, which automatically focus on any active talker; and now even more premium loudspeaker choices.

Medium and large room bundles allow the flexibility to choose the option that best suits your space. They include a Tesira processor, a Parl  ceiling or tabletop microphone, and the choice of loudspeakers according to your installation requirements:

- Desono CIC6LP ceiling mount
- Desono DXS5 surface mount
- Desono ENT206 column mount
- Desono EX-S8 surface mount
- Desono MASK6C surface mount
- Desono P6SM pendant

We also offer a small room solution that includes a Parl  2500 video conferencing bar and a UC compute. Plus, every bundle features Biamp Launch, the groundbreaking technology that analyzes any room's acoustics and automatically optimizes audio performance—all at the touch of a button.

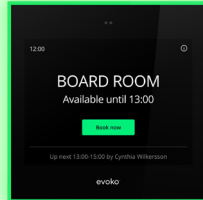
# EVOKO ROOM AND DESK MANAGERS



Evoko Naso and Kleeo are cloud-connected, highly intuitive room and desk management solutions that streamline the process of booking meeting rooms and shared desk spaces. Their overall simplicity saves valuable time and reduces scheduling conflicts, leading to more productive workdays.

## EVOKO NASO

Naso has been updated with a streamlined user interface, faster performance, and more comprehensive, and actionable, data-based insights into room usage.



## EVOKO KLEEO

Kleeo is the perfect desk booking device for any office using flexible, shared workstations. The device's overall simplicity saves valuable time and reduces scheduling conflicts.



## KEY FEATURES:

- Dedicated desks allow a desk to be assigned to a specific user.
- Compatibility with Google Workspace—in addition to Microsoft Outlook—means room scheduling can now be accomplished through two of the most popular cloud-based calendar applications.
- Naso and Kleeo now share a single admin tool for fast and easy room and desk scheduling—Biamp Workplace Admin.
- Green illumination indicates a room or desk is available, red when in use, and amber when between bookings.
- Compatible with RFID cards or tags for effortless user authentication.

# MAX CONNECT

MAX Connect is a powerful collaboration solution that transforms any space into a bring-your-own-meeting (BYOM) room. Participants can use their own devices—now including full native support for both iOS and Android—to share and interact with content, control room AV equipment, and join UC meetings using their app of choice, including Microsoft Teams and Zoom. For larger venues, Auditorium Mode enables one-to-many presentations by broadcasting HDMI content to 200+ participant devices and room displays simultaneously. Featuring a modernized user interface with Biamp familiarity, MAX Connect delivers a consistent, cohesive experience across the Biamp Workplace ecosystem.

- Dual screen support enables MAX Connect to extend participant content onto two screens in a single meeting room—a common scenario in today's collaboration environments.
- Connect up to 30 participants in a single session—ample capacity for large meetings and classrooms.
- Up to six pieces of content can be shared simultaneously: the digital whiteboard and content from as many as five presenters
- Built-in tools allow users to annotate shared content and the virtual whiteboard
- Collaboration sessions can be managed through the included handheld remote control, the optional Touch 8 MAX control panel, or a touch-enabled room display



## FEATURE HIGHLIGHTS:

- **NEW:** Auditorium Mode broadcasts presenter content to 200+ participant devices and multiple displays with view-only controls.
- **NEW:** Dual QR Codes streamline the connection process for room guests while enhancing internal security.
- **NEW:** Android app delivers native screen sharing.
- **NEW:** Updated UI features a refreshed Welcome Screen and background library.
- Users can connect through a browser, desktop apps, standard casting protocols, or with an HDMI cable.
- Every participant can interact with the shared content on their own personal device—making it easy to zoom-in or focus on specific points of interest.
- The room's camera stream can be replaced by participants' own cameras to frame themselves, a wall-mounted whiteboard, or other objects.
- Included EasyConnect USB-C adapter offers support for wired BYOM meetings.

## EASYCONNECT MPX 250

The EasyConnect MPX 250 is an innovative BYOM presentation system with integrated charging, cable management, and control of meeting room equipment. Simply connect the USB-C cable to your device and, with a simple press of a button, start sharing and using a room's AV peripherals.



### KEY FEATURES:

- **NEW:** Designed for premium spaces, the optional MPX CRS USB-C spring-loaded cable retractor system replaces the cable bag and delivers a sleek, low-visibility installation that blends into existing furniture.
- **NEW:** The optional MPX 250 Retrofit Table Adapter bridges legacy tabletop cutouts to the smaller round opening required for the MPX 250—enabling a clean retrofit in an existing table with too large of a hole.
- Connect up to four MPX 250 units to adapt the needs for various room sizes.
- Shared internet via USB-C and dual display support.
- Easily share your screen and audio with full control of room equipment.
- Vivid and helpful colors let connected participants control who is sharing their screen and who has control of the connected in-room peripherals.
- Make a call using any of the most popular UC platforms like Microsoft Teams, Zoom and Google Meet.



## EASYCONNECT MPX 250 DC



The EasyConnect MPX 250 DC expansion kit extends the power and flexibility of the EasyConnect MPX ecosystem, enabling seamless collaboration in larger or more complex meeting environments. Acting as a multi-unit hub, it connects up to four MPX 250 systems, allowing organizations to scale their conferencing capabilities without sacrificing simplicity or performance.

### KEY FEATURES:

- Connect up to four MPX 250 systems to scale BYOM deployments for larger or more complex rooms.
- Centralize multi-unit connectivity with a single expansion hub for simplified system architecture.
- Extend MPX 250 power and flexibility without compromising performance or ease of use.
- Enable consistent user experiences across multiple connected spaces within the EasyConnect MPX ecosystem.

# EASYCONNECT MPX 250 EXT 30

The EasyConnect MPX 250 EXT 30 extends MPX 250 connectivity between meeting room displays and conference tables, reducing cable routing constraints and enhancing ease of installation. The system includes the compact MPX 250 EXT wall-side connection box and a 30 foot MPX 250 Link cable with Kevlar reinforcement. Together, they enable flexible room designs from huddle spaces to boardrooms while maintaining full MPX 250 functionality. The MPX 250 EXT 30 integrates seamlessly with the MPX 250 base unit, delivering consistent BYOM connectivity across any room layout.



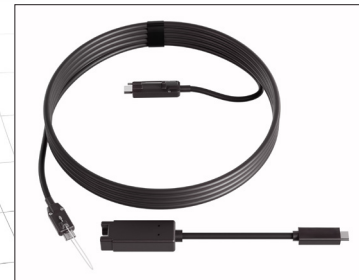
## KEY FEATURES - MPX 250 EXT 30:

- Compact design — low-profile form factor for discreet behind-display mounting.
- Full feature pass-through that maintains all MPX 250 capabilities on the wall side.
- Seamless connection to room displays and AV equipment.
- Downstream connectivity — extends MPX 250 ports to display-side peripherals.
- Enables BYOM switching functions within any UC room system.



## KEY FEATURES - MPX 250 LINK:

- USB-C Active Optic cable.
- Kevlar reinforced design supporting 200N pull-force makes it easy to pull through the conduit.
- Detachable electronics - minimal pull-connector simplifies in-wall installation.
- Steel wire integration offers built-in attachment point for easy pull-wire connection.



# VOCIA

Vocia™ is a highly reliable and scalable platform for all your paging, background music, and emergency communication needs. Vocia offers clarity and intelligibility, ensuring your messages are delivered as intended.



## KEY FEATURES:

- The Vocia TTS-2 is a unified text-to-speech server that combines core text-to-speech functionality and nurse call integration capabilities in a single offering. It comes pre-loaded with 130 natural-sounding voice fonts, providing a comprehensive solution for voice communications systems.
- Monitor, log and manage components remotely, and quickly add or replace non-functioning hardware, expanding the system as needed.
- With a decentralized network architecture, there is no single point of system failure—if any device on the network goes offline, the remainder of the system will function as normal.
- Vocia complies with the regulatory requirements of EN54-16 and NFPA Part 72 for emergency notifications.



# CAMBRIDGE QT X SERIES



The Cambridge Qt X series offers both direct-field and in-plenum functionality to address the full spectrum of sound masking needs. Qt X controllers are available in 3-zone, 6-zone, and 8-zone models, and utilize existing direct-field and indirect emitters.

The Qt X platform is designed to seamlessly integrate with Tesira systems and NPX paging solutions to enable unified programming and deployment of sound management applications.



## KEY FEATURES

- **NEW:** Qt X Zone Control transforms Qt X from a monitoring-only system into a dynamically adjustable acoustic management platform through Biamp Workplace and Workplace Command. Users can adjust masking, background music, paging, and ducking levels in real time using precision sliders, with immediate visual feedback—all without costly site visits.
- **NEW:** The Cambridge DS1339W-TAA is an in-plenum, indirect sound masking speaker that's built to meet City of Chicago building codes and TAA regulations. Manufactured in the U.S., the DS1339W-TAA features an all-metal enclosure and other specifications required for Chicago compliance.
- The Qt X As Built Report software feature automates the generation of comprehensive PDF documentation for complete Qt X sound masking system configurations, delivering clear information that's ideal for commissioning verification, facilities management, and system maintenance.
- Seamless compatibility with convenience paging microphones and background music sources.
- Support for up to 250 Qt X sound masking controllers on a single network.



# biamp<sup>™</sup>

To learn more about  
these products, scan  
the code below.



## CONTACT US:

9300 S.W. Gemini Dr.  
Beaverton, OR 97008  
USA

biampinfo@biamp.com  
biamp.com

1.800.826.1457  
+ 1.503.641.7287

