







## SPEAKER, LIGHTING AND MONITOR STANDS

König & Meyer speaker, lighting and monitor stands set the standard in their class.

Reliability, stability and solidity are particularly important in this area: Nothing less than the safety of the musicians and the audience is at stake.

Intensive research into appropriate materials from among the highest-quality plastics available and the construction of highly durable connecting parts are just some of the individual steps in a long development process.

Our latest models from the "Ring Lock" series also prove that König & Meyer speaker stands aren't just exceptionally reliable, but also provide a big plus when it comes to practicality and handiness.



**SPEAKER/MONITOR STAND**

21420	BASELINE
Weight	1.38 kg
Special features	lightweight stand
Material	aluminum
Number of legs	3 pieces
Leg construction	tube legs with cross braces
Height adjustment	clamping element with locking screw
Max. load capacity	12 kg
Tube end(s)	diameter 25 mm
Rod combination	2-piece folding design
Height	from 1,265 to 2,105 mm

**Order No.**

black 21420-000-55

**Accessories**
**Page**

FLANGE ADAPTER 19665 229  
CARRYING CASE 21422 233

**SPEAKER STAND**

21435	BASELINE
Weight	5.5 kg
Special features	patented gradual height adjustment system; integrated shock absorber; mounting aid included
Material	steel
Number of legs	3 pieces
Leg construction	tube legs with cross braces
Height adjustment	locking screw with push-button system
Max. load capacity	50 kg
Tube end(s)	diameter 35 mm
Rod combination	2-piece folding design
Height	from 1,320 to 2,020 mm

**Order No.**

black 21435-009-55

**Accessories**
**Page**

CARRYING CASE 21311 233  
CARRYING CASE »Pro« 21312 233

**SPEAKER STAND**

21436	BASELINE
Weight	3.5 kg
Special features	lightweight stand; patented gradual height adjustment system; integrated shock absorber; steel extension tube; mounting aid included
Material	aluminum
Number of legs	3 pieces
Leg construction	tube legs with cross braces
Height adjustment	locking screw with push-button system
Max. load capacity	40 kg
Tube end(s)	diameter 35 mm
Rod combination	2-piece folding design
Height	from 1,320 to 2,020 mm

**Order No.**

black 21436-009-55

**Accessories**
**Page**

CARRYING CASE 21311 233  
CARRYING CASE »Pro« 21312 233




**SPEAKER STAND**

21450	BASELINE
Weight	2.34 kg
Special features	easy-to-use clamping levers; adapter sleeve 21326 included
Material	aluminum
Number of legs	3 pieces
Leg construction	tube legs with cross braces
Height adjustment	clamping lever and safety pin
Max. load capacity	50 kg
Tube end(s)	diameter 35 mm
Rod combination	2-piece folding design
Height	from 1,270 to 1,930 mm

**Order No.**

anodized aluminum	21450-000-30
black	21450-000-55

**SPEAKER STAND PACKAGE**

21459	BASELINE
Weight	5.5 kg
Special features	2 x K&M Speaker Stand 21450 in a Carrying Case

**Order No.**

black	21459-000-55
-------	--------------

**SPEAKER STAND**

19500	TOPLINE
Weight	6.7 kg
Special features	particularly useful when space is restricted; folds flat; integrated shock absorber
Material	steel
Number of legs	4 pieces
Base diameter	950 mm
Leg construction	collapsible square tube legs
Height adjustment	spring-loaded bolt and locking screw
Max. load capacity	50 kg
Tube end(s)	diameter 35 mm
Rod combination	2-piece folding design
Size when folded	1,075 x 125 x 125 mm
Height	from 1,240 to 1,940 mm

**Order No.**

black	19500-011-55
-------	--------------

**Accessories**

CARRYING CASE 21311

**Page**

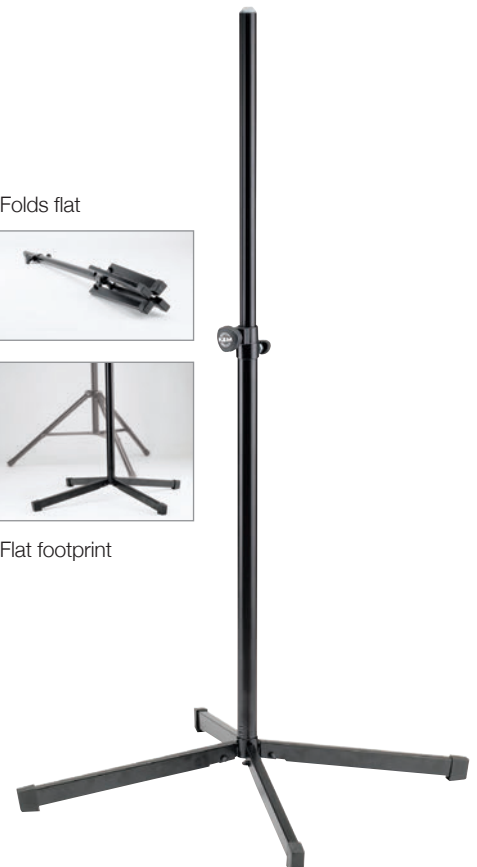
233



Folds flat



Flat footprint





## SPEAKER STAND

21455	TOPLINE
Weight	3.3 kg
Special features	lightweight stand; steel extension tube; integrated shock absorber; for low to medium height applications
Material	aluminum
Number of legs	3 pieces
Leg construction	tube legs with double cross braces
Height adjustment	spring-loaded bolt and locking screw
Max. load capacity	40 kg
Tube end(s)	diameter 35 mm
Rod combination	2-piece folding design
Height	from 1,005 to 1,545 mm

### Order No.

black 21455-009-55

### Accessories

### Page

CARRYING CASE 18846 138





Mounting aid



Heavy-duty aluminum stand;  
World-wide classic



TÜV type  
approved for loads  
up to 50 kg

## SPEAKER STAND

214/6	TOPLINE
Weight	4.3 kg
Special features	lightweight stand; steel extension tube; integrated shock absorber; gradual height adjustment system; zinc die-cast connecting parts; mounting aid included
Material	aluminum
Number of legs	3 pieces
Leg construction	tube legs with double cross braces
Height adjustment	spring-loaded bolt and locking screw
Max. load capacity	50 kg
Tube end(s)	diameter 35 mm
Rod combination	2-piece folding design
Height	from 1,375 to 2,185 mm

### Order No.

black	21460-009-55
white	21460-009-57
silver	21460-009-81

The world-wide acclaimed speaker stand has been upgraded. All clamps are now high quality zinc die-cast. The new leg construction and large fixed foot end caps enhance safety and stability even further. This professional stand is TÜV (German Technical Supervisory Agency) approved for a maximum central load capacity of 50 kg. Other features such as the pull-out guard for the extension tube, the integral anti-shock component and comfortable height adjustment with spring-loaded bolt and locking screw have of course been retained. Comes with a mounting aid on the extension rod.

Accessories	Page
CARRYING CASE 21311	233
CARRYING CASE »Pro« 21312	233



**SPEAKER STAND**

26750	TOPLINE
Weight	9.8 kg
Special features	for stationary use; speaker will be fixed with flange adapter
Material	steel
Base diameter	450 mm
Leg construction	round cast-iron base
Height adjustment	locking screw and safety pin
Max. load capacity	35 kg
Tube end(s)	diameter 35 mm
Rod combination	2-piece folding design
Height	from 950 to 1,430 mm

**Order No.**

black 26750-000-55

**Accessories****Page**

Carrier Bag for Round Base 26751 233

**SPEAKER STAND**

26735	TOPLINE
Weight	11 kg
Special features	for stationary use; speaker will be fixed with flange adapter; mounting aid included
Material	steel
Base diameter	450 mm
Leg construction	round cast-iron base
Height adjustment	spring-loaded bolt and locking screw
Max. load capacity	35 kg
Tube end(s)	diameter 35 mm
Rod combination	2-piece folding design
Height	from 1,100 to 1,810 mm

**Order No.**

black 26735-000-55

**Accessories****Page**

Carrier Bag for Round Base 26751 233





## SPEAKER STAND

213	STARLINE
Weight	8.6 kg
Special features	push-button system and hand crank avoid uncontrolled reverse motion; locking screw provides additional safety; zinc die-cast connecting parts
Material	steel
Number of legs	3 pieces
Leg construction	tube legs with double cross braces
Height adjustment	hand crank with push-button system and locking screw
Max. load capacity	50 kg
Tube end(s)	diameter 35 mm, integrated threaded bush M10 for crossbars
Rod combination	2-piece folding design
Height	from 1,385 to 2,180 mm

### Order No.

black 21300-009-55

A high quality professional speaker stand. Infinitely variable height adjustment is easy and comfortable with its hand crank system. A push-button prevents uncontrolled reverse motion. An additional locking screw guarantees extra safety. The extremely stable stand is TÜV (German Technical Supervisory Agency) approved for a maximum central weight of 50 kg.

Accessories	Page
CARRYING CASE 21311	233
CARRYING CASE »Pro« 21312	233





**SPEAKER STAND**

21302	STARLINE
Weight	7.5 kg
Special features	push-button system and hand crank avoid uncontrolled reverse motion; locking screw provides additional safety; plastic connecting parts
Material	steel
Number of legs	3 pieces
Leg construction	tube legs with cross braces
Height adjustment	hand crank with push-button system and locking screw
Max. load capacity	40 kg
Tube end(s)	diameter 35 mm, integrated threaded bush M10 for crossbars
Rod combination	2-piece folding design
Height	from 1,385 to 2,180 mm

**Order No.**

black 21302-009-55

**SPEAKER STAND WITH PNEUMATIC SPRING**

21463	STARLINE
Weight	6 kg
Special features	pneumatic spring with 25 kg power, for easy and safely lift up of speakers; lightweight stand; steel extension tube; gradual height adjustment system; zinc die-cast connecting parts; mounting aid included
Material	aluminum
Number of legs	3 pieces
Leg construction	tube legs with double cross braces
Height adjustment	spring-loaded bolt and locking screw
Max. load capacity	50 kg
Tube end(s)	diameter 35 mm
Rod combination	2-piece folding design
Height	from 1,375 to 2,185 mm

**Order No.**

black 21463-000-55

**SPEAKER STAND**

21494	STARLINE
Weight	3.29 kg
Special features	5-leg construction provides best stability; lightweight stand; steel extension tube; patented gradual height adjustment system; mounting aid included
Material	aluminum
Number of legs	5 pieces
Leg construction	U-profile legs with cross braces
Height adjustment	locking screw with push-button system
Max. load capacity	35 kg
Tube end(s)	diameter 35 mm
Rod combination	2-piece folding design
Height	from 1,395 to 2,175 mm

**Order No.**

black 21494-000-55



TÜV type approved for loads up to 40 kg

Heavy-duty stand

Easy-to-use



Spring-loaded bolt and locking screw

Pneumatic spring with 25 kg power



TÜV type approved for loads up to 50 kg



p13e.k-m.de  
Product video



Mounting aid



TÜV type approved for loads up to 35 kg

The 5-leg construction of U-profile tubing provides best stability



Easy-to-use ring lock system

Tight and firm fit for the speaker



TÜV type approved for loads up to 50 kg

**SPEAKER STAND »RING LOCK«**
**NEW**
**21467**
**STARLINE**

Weight	4.6 kg
Special features	lightweight stand; steel extension tube; patented expanding mandrel system »Ring Lock«; vibration-free connection due to moveable plastic splints
Material	aluminum
Number of legs	3 pieces
Leg construction	tube legs with double cross braces
Height adjustment	spring-loaded bolt and locking screw
Max. load capacity	50 kg
Tube end(s)	»Ring Lock« diameter 35 to 37 mm
Rod combination	2-piece folding design
Height	from 1,370 to 2,050 mm

**Order No.**

black

21467-000-55

An exceptional aluminum speaker stand with a unique patented expanding mandrel system that provides a stable, tight and firm fit for speakers. The movable plastic splints provide for a vibration-free connection between the rod and the speaker. Connecting the speaker is easy and is done using the handy ring lock - which is simply placed in position and screwed on. The height is adjusted by an easy-to-use spring loaded bolt and locking screw. Double foot struts, zinc die cast clamping brackets and large end caps provide for highest degree of stand stability. It can't get any better than this!





## MONITOR STAND

26720	TOPLINE
Weight	5.35 kg
Special features	internal cable routing possible; support plate with rubber bumps; for stationary use
Material	steel
Number of legs	3 pieces
Leg construction	fixed screw-in legs
Height adjustment	locking screw and safety pin
Max. load capacity	35 kg
Rod combination	2-piece folding design
Bearing plate	245 x 205 mm
Height	from 680 to 1,140 mm

**Order No.**

black	26720-000-55
-------	--------------

## MONITOR STAND

26740	TOPLINE
Weight	9.88 kg
Special features	direct attachment of monitors with 3/8" threaded joint (thread length 12 mm) possible; support plate with 4 thread points and 4 rubber knobs; for stationary use
Material	steel
Base diameter	450 mm
Leg construction	round cast-iron base
Height adjustment	locking screw and safety pin
Max. load capacity	35 kg
Rod combination	2-piece folding design
Bearing plate	245 x 205 mm
Height	from 950 to 1,430 mm

**Order No.**

black	26740-000-55
-------	--------------

**Accessories****Page**

CARRIER BAG

FOR ROUND BASE 26751

233

## PROJECTOR TRAY

26747	TOPLINE
Weight	3.2 kg
Special features	for projectors, monitors and for other equipment
Material	steel
Bearing plate	420 x 380 mm
Function	to slip on stand
Suitable for tubing diameter of	35 mm

**Order No.**

black	26747-000-55
-------	--------------



**DESIGN MONITOR STAND**

26785	STARLINE
Weight	13.82 kg
Special features	for the Genelec 8000 monitor series; quick, uncomplicated mounting of the monitor is accomplished using the suspension device; gradual height adjustment system
Material	steel
Leg construction	cast-iron base
Height adjustment	spring-loaded clamping knob
Rod combination	2-piece folding design
Base dimensions	420 x 420 mm
Height	from 1,100 to 1,700 mm

<b>Order No.</b>
structured black 26785-000-56

**DESIGN MONITOR STAND**

26795	STARLINE
Weight	18.735 kg
Special features	gradual height adjustment system
Material	steel
Leg construction	cast-iron base
Height adjustment	spring-loaded clamping knob
Rod combination	2-piece folding design
Base dimensions	480 x 480 mm
Height	from 800 to 1,350 mm

<b>Order No.</b>
structured black 26795-000-56

<b>Accessories</b>	<b>Page</b>
BEARING PLATE 26792	215

**BEARING PLATE**

26792	STARLINE
Special features	available in three different sizes; 4 spikes and 4 rubber knobs included
Material	steel
Fits	26795

<b>Order No.</b>
structured black, 240 x 5 x 200 mm, 1,8 kg 26792-024-56
structured black, 320 x 5 x 280 mm, 3,4 kg 26792-032-56
structured black, 420 x 5 x 380 mm, 6,0 kg 26792-042-56





**ADAPTER**

21329	
Weight	0.6 kg
Material	steel
Tube end(s)	threaded bush M20, threaded bolt M20
Height	250 mm

**Order No.**

black 21329-025-55

**EXTENSION ROD**

213/3	
Weight	1.76 kg
Material	steel
Tube end(s)	threaded bush M10, threaded bolt M10
Height	990 mm

**Order No.**

black 21330-900-55

**DISTANCE ROD**

21333	
Weight	0.746 kg
Material	steel
Tube end(s)	diameter 35 mm
Height	745 mm

**Order No.**

black 21333-000-55



DISTANCE ROD

21334	
Weight	1.14 kg
Special features	for precise fit
Material	steel
Tube end(s)	diameter 35 mm, threaded bolt M20

Order No.	
black, 880 mm	21334-000-55
black, 500 mm	21334-050-55

Accessories	Page
CONNECTOR PLATE 24116	222

DISTANCE ROD

21336	
Weight	2.4 kg
Special features	mounting aid included
Material	steel
Height adjustment	spring-loaded bolt and locking screw
Tube end(s)	diameter 35 mm
Rod combination	2-piece folding design
Height	from 945 to 1,475 mm

Order No.	
black	21336-000-55

DISTANCE ROD

21337	
Weight	2.68 kg
Special features	for precise fit; mounting aid included
Material	steel
Height adjustment	spring-loaded bolt and locking screw
Tube end(s)	diameter 35 mm, threaded bolt M20
Rod combination	2-piece folding design
Height	from 905 to 1,450 mm

Order No.	
black	21337-000-55
white	21337-000-57

Accessories	Page
CONNECTOR PLATE 24116	222



Mounting aid



**DISTANCE ROD**
**NEW**

26736	
Weight	2.85 kg
Special features	for precise fit; mounting aid included
Material	steel
Height adjustment	spring-loaded bolt and locking screw
Tube end(s)	diameter 35 mm, threaded bolt M20
Rod combination	2-piece folding design
Height	from 1,085 to 1,785 mm

**Order No.**

black 26736-000-55

**Accessories**
**Page**

CONNECTOR PLATE 24116

222

**DISTANCE ROD WITH HAND CRANK**

21338	
Weight	3.59 kg
Special features	push-button system and hand crank avoid uncontrolled reverse motion; locking screw provides additional safety
Material	steel
Height adjustment	hand crank with push-button system and locking screw
Tube end(s)	diameter 35 mm
Rod combination	2-piece folding design
Height	from 1,040 to 1,605 mm

**Order No.**

black 21338-000-55

**DISTANCE ROD WITH HAND CRANK**

21339	
Weight	3.78 kg
Special features	push-button system and hand crank avoid uncontrolled reverse motion; locking screw provides additional safety; M20 bolt for precise and vertical fit
Material	steel
Height adjustment	hand crank with push-button system and locking screw
Tube end(s)	diameter 35 mm, threaded bolt M20
Rod combination	2-piece folding design
Height	from 940 to 1,505 mm

**Order No.**

black 21339-000-55

**Accessories**
**Page**

CONNECTOR PLATE 24116

222





**DISTANCE ROD  
WITH HAND CRANK AND »RING LOCK«**

21340	
Weight	3.8 kg
Special features	patented expanding mandrel system »Ring Lock«; vibration-free connection due to moveable plastic splints; push-button system and hand crank avoid uncontrolled reverse motion; locking screw provides additional safety; M20 bolt for precise and vertical fit
Material	steel
Height adjustment	hand crank with push-button system and locking screw
Tube end(s)	»Ring Lock« diameter 35 to 37 mm, threaded bolt M20
Rod combination	2-piece folding design
Height	from 920 to 1,520 mm

**Order No.**

black 21340-000-55

**Accessories**

CONNECTOR PLATE 24116

**Page**

222

 Easy-to-use  
ring lock system

 Tight and firm fit  
for the speaker

**DISTANCE ROD**

21347	
Weight	2.24 kg
Special features	M20 bolt for precise and vertical fit
Material	steel
Height adjustment	locking screw and safety pin
Tube end(s)	diameter 35 mm, threaded bolt M20
Rod combination	2-piece folding design
Height	from 905 to 1,385 mm

**Order No.**

black 21347-000-55

**Accessories**

CONNECTOR PLATE 24116

**Page**

222


**DISTANCE ROD**

21348	
Weight	2.16 kg
Special features	with additional levelling adapter for a clearance-free fit
Material	steel
Height adjustment	locking screw and safety pin
Tube end(s)	diameter 35 mm
Rod combination	2-piece folding design
Height	from 970 to 1,490 mm

**Order No.**

black 21348-000-55



**DISTANCE ROD »RING LOCK«**

21360	
Weight	1.15 kg
Special features	patented expanding mandrel system »Ring Lock«; vibration-free connection due to moveable plastic splints
Material	steel
Tube end(s)	»Ring Lock« diameter 35 to 37 mm
Height	750 mm

**Order No.**

black 21360-000-55

**DISTANCE ROD »RING LOCK«**

21364	
Weight	1.3 kg
Special features	patented expanding mandrel system »Ring Lock«; vibration-free connection due to moveable plastic splints; M20 bolt for precise and vertical fit
Material	steel
Tube end(s)	»Ring Lock« diameter 35 to 37 mm, threaded bolt M20
Height	880 mm

**Order No.**

black 21364-000-55

**Accessories**

CONNECTOR PLATE 24116

**Page**

222

**DISTANCE ROD »RING LOCK«****NEW**

21366	
Weight	2.9 kg
Special features	patented expanding mandrel system »Ring Lock«; vibration-free connection due to moveable plastic splints
Material	steel
Height adjustment	spring-loaded bolt and locking screw
Tube end(s)	»Ring Lock« diameter 35 to 37 mm
Rod combination	2-piece folding design
Height	from 980 to 1,470 mm

**Order No.**

black 21366-014-55

Tight and firm fit  
for the base and  
satellite speakerEasy-to-use  
ring lock systemTight and firm fit  
for the speakerEasy-to-use  
ring lock systemTight and firm fit  
for the base and  
satellite speaker

Easy-to-use  
ring lock system



Tight and firm fit  
for the speaker



**DISTANCE ROD »RING LOCK«**

**NEW**

21367	
Weight	2.76 kg
Special features	patented expanding mandrel system »Ring Lock«; vibration-free connection due to moveable plastic splints; M20 bolt for precise and vertical fit
Material	steel
Height adjustment	spring-loaded bolt and locking screw
Tube end(s)	»Ring Lock« diameter 35 to 37 mm, threaded bolt M20
Rod combination	2-piece folding design
Height	from 890 to 1,380 mm

Order No.	
black	21367-014-55

This high quality, height adjustable distance rod is a guarantee for a secure, stable and quiet connection to satellite systems. The height is adjusted by an easy-to-use spring loaded bolt and locking screw. The distance rod is connected to the subwoofer using the M20 threaded bolt. The unique patented expanding mandrel system provides a stable, tight and firm fit for satellite speakers. The movable plastic splints provide for a vibration-free connection between the rod and the speaker. Connecting the speaker is easy and is done using the handy ring lock - which is simply placed in position and screwed on.

Accessories	Page
CONNECTOR PLATE 24116	222





## CONNECTOR PLATE

### 24116

Weight	0.24 kg
Material	zinc die-cast
Bore holes	diameter 6.5 mm (4 x)
Function	to screw on speakers
Diameter	105 mm
Height	25 mm
Threaded connector	M20
Fits	21334, 21337, 21339, 21340, 21347, 21364, 21367, 26736, 26736

### Order No.

black 24116-000-55





### SPEAKER WALL MOUNT

241	
Weight	2.74 kg
Special features	interchangeable mounting bolt
Material	steel
Max. load capacity	50 kg
Mounting bolt	diameter 35 mm x 85 mm
Wall-to-bolt clearance	420 mm
Mounting	attaches to walls

#### Order No.

black 24100-000-55

### SPEAKER WALL MOUNT

24110	
Weight	2.7 kg
Special features	patented straddling bearing-anchors; guarantee effective clamping of speaker in any position; resonance-optimised construction
Material	steel
Max. load capacity	50 kg
Mounting bolt	straddling bearing-anchors diameter 35 to 37 mm x 85 mm
Wall-to-bolt clearance	420 mm
Mounting	attaches to walls
Angle of inclination	0° to 22°
Adjustment	gradual in 11 settings

#### Order No.

black 24110-000-55  
white 24110-000-57



**SPEAKER WALL MOUNT**

24120	
Weight	6.2 kg
Special features	very flexible; patented straddling bearing-anchors; guarantee effective clamping of speaker in any position; resonance-optimised construction
Material	steel
Max. load capacity	50 kg
Mounting bolt	straddling bearing-anchors diameter 35 to 37 mm x 85 mm
Wall-to-bolt clearance	420 mm
Mounting	attaches to walls
Angle of inclination	0° to 22°
Swivel	180°
Adjustment	gradual in 11 settings
Wall plate	580 x 140 mm

**Order No.**

black 24120-000-55

The swivelling and tiltable wall mount holds your speaker at the angle you want. The mount has 11 different tilt settings moving through 22°.

The swivel is adjustable to any angle. The patented expanding mandrel for loud speakers with cabinet interiors of diameter from 35 to 37 mm is tightened with a key for a non-wobble and low-resonance speaker fit.

GS-approved for loads up to 50 kg



Tighten/loosen clamping element with enclosed key



## SPEAKER WALL MOUNT

24150	
Weight	2.96 kg
Material	steel
Max. load capacity	50 kg
Mounting bolt	diameter 35 mm x 100 mm
Mounting	clamp
Swivel	180°
Wall clearance	520 mm

### Order No.

black 24150-000-55

## UNIVERSAL SPEAKER WALL MOUNT

24161	
Weight	0.5 kg
Material	steel
Max. load capacity	15 kg
Bearing plate	100 x 90 mm
Mounting	attaches to walls
Angle of inclination	0° to 45°
Swivel	110°
Adjustment	stepless
Wall clearance	65 mm
Ceiling mounting plate diameter	95 mm
Spacing of holes	from 70 to 76,2 mm

### Order No.

structured black 24161-000-56  
structured white 24161-000-66

**NEW**

## SPEAKER WALL MOUNT

24180	
Weight	0.74 kg
Special features	small (20 x 98 mm) and wide bracket (24 x 98 mm) included
Material	steel
Max. load capacity	10 kg
Bearing plate	50 x 98.5 mm
Mounting	attaches to walls
Angle of inclination	0° to 15°
Swivel	180°
Wall clearance	105 mm
Wall plate	130 x 70 mm

### Order No.

black 24180-000-55  
white 24180-000-57



GS-approved for loads up to 50 kg



Flexible and compact.

For loud speakers up to 15 kg.



GS-approved for loads up to 10 kg

**SPEAKER WALL MOUNT**

24185	
Weight	0.7 kg
Special features	also suitable as ceiling mount
Material	steel
Max. load capacity	8 kg
Bearing plate	95 x 80 mm
Mounting	attaches to walls and ceilings
Angle of inclination	0° to 90°
Swivel	360°
Adjustment	swivel ball joint assembly
Wall clearance	175 mm
Wall plate	95 x 95 mm

**Order No.**

black 24185-000-55

**SPEAKER WALL MOUNT**

24195	
Weight	1.08 kg
Special features	also suitable as ceiling mount; steel safety wire cable included
Material	steel
Max. load capacity	15 kg
Bearing plate	127 x 60 mm
Mounting	attaches to walls and ceilings
Angle of inclination	0° to 90°
Swivel	360°
Adjustment	tooth system with wing nut
Wall clearance	271 mm
Wall plate	170 x 95 mm

**Order No.**

black 24195-000-55

**SPEAKER WALL MOUNT**

24465	
Weight	0.61 kg
Special features	to hold a JBL Control one speaker
Material	steel
Mounting	attaches to walls
Angle of inclination	0° to 90°
Swivel	85°
Wall clearance	153 mm
Wall plate	120 x 85 mm

**Order No.**black 24465-000-55  
white 24465-000-57

GS-approved for loads up to 8 kg





### SPEAKER WALL MOUNT

24470	
Weight	1.17 kg
Special features	with universal adapter plate; easy mounting by convenient hooking in and screw locking; swivelling and tiltable
Material	steel
Max. load capacity	15 kg
Bearing plate	150 x 95 mm
Mounting	attaches to walls
Angle of inclination	0° to 30°
Swivel	90°
Wall clearance	110 mm
Wall plate	160 x 90 mm

#### Order No.

black	24470-000-55
white	24470-000-57

### SPEAKER WALL MOUNT

24471	
Weight	0.87 kg
Special features	easy mounting by convenient hooking in and screw locking; swivelling and tiltable
Material	steel
Max. load capacity	15 kg
Mounting	attaches to walls
Angle of inclination	0° to 30°
Swivel	90°
Wall clearance	110 mm
Wall plate	160 x 90 mm

#### Order No.

black	24471-000-55
white	24471-000-57

### SPEAKER WALL MOUNT

24480	
Weight	1.69 kg
Special features	with universal adapter plate; easy mounting by convenient hooking in and screw locking; swivelling and tiltable; large wall plate for heavy speakers
Material	steel
Max. load capacity	25 kg
Bearing plate	150 x 95 mm
Mounting	attaches to walls
Angle of inclination	0° to 30°
Swivel	90°
Wall clearance	110 mm
Wall plate	220 x 120 mm

#### Order No.

black	24480-000-55
white	24480-000-57



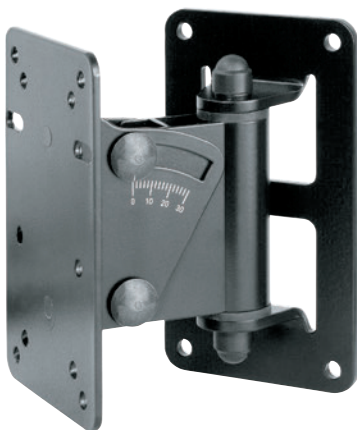
TÜV type approved  
for loads up to 15 kg



TÜV type approved  
for loads up to 15 kg



TÜV type approved for  
loads up to 25 kg



**SPEAKER WALL MOUNT**

24481	
Weight	1.34 kg
Special features	easy mounting by convenient hooking in and screw locking; swivelling and tiltable; large wall plate for heavy speakers
Material	steel
Max. load capacity	25 kg
Mounting	attaches to walls
Angle of inclination	0° to 30°
Swivel	90°
Wall clearance	110 mm
Wall plate	220 x 120 mm

**Order No.**

black	24481-000-55
white	24481-000-57

**SPEAKER WALL MOUNT**

24484	
Weight	1.6 kg
Special features	easy mounting by convenient hooking in and screw locking; swivelling and tiltable; screws and keys are included; suitable for JBL Series LSR 2328 P, 2325 P, 4328 P and 4326 P
Material	steel
Max. load capacity	20 kg
Mounting	attaches to walls
Angle of inclination	0° to 30°
Swivel	120°
Wall clearance	404 mm
Wall plate	90 x 160 mm

**Order No.**

black	24484-000-55
-------	--------------

**SPEAKER CEILING MOUNT**

24485	
Weight	1.15 kg
Special features	suitable for example for the Genelec 8000 monitor series; swivelling and tiltable
Material	steel
Max. load capacity	15 kg
Mounting	attaches to ceilings
Angle of inclination	0° to 45°
Swivel	360°
Ceiling clearance	255 mm
Ceiling mounting plate diameter	140 mm
Spacing of holes	70 or 76.2 mm

**Order No.**

black	24485-000-55
white	24485-000-57



TÜV type approved  
for loads up to 25 kg



**MOUNTING ADAPTER**

195/8	
Weight	0.68 kg
Material	steel
Dimensions	175 x 110 x 104 mm
Bore holes	35 x 9.5 mm (2 x )
Function	to screw on speakers, to slip on stand
Spacing of holes	from 100 to 152 mm
Suitable for tubing diameter of	35 mm

**Order No.**

black 19580-000-55

**FLANGE ADAPTER**

19654	
Weight	0.077 kg
Material	plastic
Bore holes	diameter 6.5 mm (4 x)
Function	to screw into speaker, to slip on stand
Suitable for tubing diameter of	35 mm
Installation depth	60.5 mm
Flange	diameter 105 mm

**Order No.**

black 19654-000-55

**FLANGE ADAPTER**

19656	
Weight	0.34 kg
Material	zinc die-cast
Bore holes	diameter 6.5 mm (4 x)
Function	to screw into speaker, to slip on stand
Suitable for tubing diameter of	35 mm
Installation depth	75 mm
Flange	diameter 105 mm

**Order No.**

black 19656-000-55

**FLANGE ADAPTER**

19665	
Weight	0.38 kg
Material	steel
Bore holes	diameter 6.5 mm (4 x)
Function	to screw into speaker, to slip on stand
Suitable for tubing diameter of	25 mm
Installation depth	78 mm
Flange	diameter 105 mm
Fits	21420

**Order No.**

black 19665-000-55

**SCREW-ON ADAPTER**

24281	
Weight	0.56 kg
Special features	secured by locking screw
Material	steel
Dimensions	146 x 40 x 105 mm
Bore holes	diameter 11 mm (2 x )
Function	to screw on speakers, to slip on stand
Spacing of holes	115 mm
Suitable for tubing diameter of	35 mm

**Order No.**

black 24281-000-55



## SPEAKER TILT CONNECTOR

19670	
Weight	0.62 kg
Special features	secured by locking screws; with setting scale
Material	steel
Max. load capacity	25 kg
Height	230 mm
Angle of inclination	0° to 15°
Function	to slip on stand, to insert into speaker
Suitable for tubing diameter of	35 mm

### Order No.

black 19670-000-55



Setting scale



## SPEAKER TILT CONNECTOR »RING LOCK«

19674	
Weight	0.84 kg
Special features	patented expanding mandrel system »Ring Lock«; vibration-free connection due to moveable plastic splints; secured by locking screws; with setting scale
Material	steel
Max. load capacity	25 kg
Tube end(s)	»Ring Lock« diameter 35 to 37 mm
Height	300 mm
Angle of inclination	0° to 15°
Function	to slip on stand, to insert into speaker
Suitable for tubing diameter of	35 mm

### Order No.

black 19674-000-55



Easy-to-use ring lock system



Tight and firm fit for the speaker

## SPEAKER MOUNT

NEW

19688	
Weight	0.36 kg
Special features	to hold a JBL Control One speaker
Material	steel
Swivel	250°
Suitable for	3/8" thread

### Order No.

black 19688-300-55



Prismatic »V-block« Connector





INCLINABLE STAND ADAPTER

19780	
Weight	0.54 kg
Special features	assembly is easy as the swivel mount is first attached to the stand and then slotted into the bracket; tiltable
Material	steel
Max. load capacity	15 kg
Height	80 mm
Angle of inclination	0° to 30°
Function	to slip on stand
Suitable for tubing diameter of	35 mm

Order No. \_\_\_\_\_  
black 19780-000-55

ADAPTER SLEEVE »RING LOCK«

21441	
Weight	0.66 kg
Special features	patented expanding mandrel system »Ring Lock«; vibration-free connection due to moveable plastic splints; secured by locking screw
Material	steel
Tube end(s)	»Ring Lock« diameter 35 to 37 mm
Height	270 mm
Function	to slip on stand, to insert into speaker
Suitable for tubing diameter of	35 mm

Order No. \_\_\_\_\_  
black 21441-000-55

ADAPTER SLEEVE

21326	
Weight	0.01 kg
Special features	for speaker flanges with inside tube diameter 38 mm
Material	plastic
Height	102 mm
Function	to slip on stand
Suitable for tubing diameter of	35 mm

Order No. \_\_\_\_\_  
black 21326-000-55



## LEVELLING ADAPTER

85890	
Weight	0.01 kg
Special features	for distance rods; for a wobble-free fit; two adapter rings, one at each side of the rod, should be used with a satellite system
Material	plastic
Suitable for tubing diameter of	35 mm
Diameter	42 mm
Height	14.5 mm

### Order No.

black (unit: 2 pcs.) 85890-000-55



## SPEAKER MOUNTING FORK

24105	
Weight	1.48 kg
Special features	for 2 speakers; secured by locking screw
Material	steel
Mounting bolt	diameter 35 mm x 120 mm
Function	to slip on stand
Suitable for tubing diameter of	35 mm
Width-adjustable	from 310 to 490 mm

### Order No.

black 24105-000-55



## SAFETY RING

213/1	
Weight	0.19 kg
Material	aluminum
Suitable for tubing diameter of	36 mm
Diameter	52 mm
Height	35 mm

### Order No.

black 21310-000-55



## WARNING STRIP

21402	
Weight	0.08 kg
Special features	reflective collar; yellow/black stripes printed with „CAUTION“
Material	nylon
Dimensions	600 x 175 mm
Mounting	leg of the stand with velcro

### Order No.

21402-000-00



## CABLE HOLDER

21403	
Weight	0.01 kg
Special features	for better cable management
Material	velours, velcro
Dimensions	220 x 25 x 1.5 mm

### Order No.

black (unit: 3 pcs.) 21403-003-55



## CABLE CLAMP

21404	
Weight	0.016 kg
Special features	for speaker stands & lighting stands; for up to 12 cables; 2 cable clamps are included in the delivery
Material	plastic
Dimensions diameter	61 x 16 mm
Suitable for tubing diameter of	35 to 42 mm

## Order No.

black 21404-000-55



## CARRYING CASE

21311	
Weight	1 kg
Special features	to store and transport two speaker/lighting stands; two inside compartments
Material	nylon
Dimensions	1,200 x 250 x 250 mm
Handle or carrying type	handle
Fastener	zip fastener
Fits	19500, 213, 214/6, 21411, 21435, 21436, 21456, 21463, 21467, 28070

## Order No.

21311-000-00



## CARRYING CASE »PRO«

21312	
Special features	to store and transport two speaker/lighting stands; two inside compartments
Material	nylon
Dimensions	1,200 x 250 x 250 mm
Handle or carrying type	handle
Fastener	zip fastener
Fits	213, 214/6, 21411, 21435, 21436, 21456, 21463, 21467, 28070

## Order No.

21312-000-00



## CARRYING CASE

21422	
Weight	0.41 kg
Special features	to store and transport two speaker/monitor stands; two inside compartments
Material	nylon
Dimensions	1,290 x 140 x 140 mm
Handle or carrying type	handle
Fastener	cord fastener
Fits	20800, 21231, 21420

## Order No.

21422-000-00



## CARRYING CASE

24611	
Weight	1.13 kg
Special features	to store and transport two lighting/speaker stands; two inside compartments; snap fasteners adjust the sizes, 2250 or 1750 mm
Material	nylon
Dimensions	2,250 x 320 x 170 mm
Handle or carrying type	handle
Fastener	zip fastener
Fits	246/1, 24620, 24625, 24630, 24640

## Order No.

24611-000-00



## CARRIER BAG FOR ROUND BASE

26751	
Material	nylon
Dimensions diameter	460 x 25 mm
Handle or carrying type	handle
Fastener	zip fastener
Suitable for	round cast-iron base diam. 450 mm
Fits	26735, 26740, 26750

## Order No.

26751-000-00



### LIGHTING STAND

24620	BASELINE
Weight	3.66 kg
Special features	lightweight stand; aluminum crossbar included; crossbar with boreholes for up to 8 spotlights
Material	aluminum
Number of legs	3 pieces
Leg construction	tube legs with cross braces
Height adjustment	clamping lever and safety pin
Max. load capacity	20 kg
Tube end(s)	diameter 35 mm
Rod combination	2-piece folding design
Height	from 1,750 to 3,000 mm
Crossbar dimensions	diameter 35 x 1,230 mm

#### Order No.

black anodized 24620-000-35

#### Accessories

#### Page

CARRYING CASE 24611 233  
SCREW FITTING SET 24621 237


### LIGHTING STAND

24625	BASELINE
Weight	2.71 kg
Special features	lightweight stand; with adapter to take a TV pin (inner extension tube diameter 28 mm)
Material	aluminum
Number of legs	3 pieces
Leg construction	tube legs with cross braces
Height adjustment	clamping lever and safety pin
Max. load capacity	20 kg
Tube end(s)	diameter 35 mm
Rod combination	2-piece folding design
Height	from 1,800 to 3,220 mm

#### Order No.

black anodized 24625-000-35

#### Accessories

#### Page

CARRYING CASE 24611 233  
CROSSBAR 24622 237


With adapter  
to take a TV pin

### LIGHTING STAND

24630	TOPLINE
Weight	7 kg
Material	steel
Number of legs	3 pieces
Leg construction	tube legs with cross braces
Height adjustment	locking screw with push-button system
Max. load capacity	20 kg
Tube end(s)	diameter 35 mm, integrated threaded bush M10 for crossbars
Rod combination	2-piece folding design
Height	from 1,955 to 2,915 mm

#### Order No.

black 24630-009-55

#### Accessories

#### Page

CROSSBAR 213/9 237  
CROSSBAR 21393 237  
SIDE CROSSBAR 24637 237  
CROSSBAR 24622 237  
CARRYING CASE 24611 233




## LIGHTING STAND

24640	TOPLINE
Weight	13 kg
Special features	adjustable up to 4 m; additional safety rings
Material	steel
Number of legs	3 pieces
Leg construction	tube legs with double cross braces
Height adjustment	non-scratching locking screws
Max. load capacity	20 kg
Tube end(s)	diameter 30 mm, integrated threaded bush M10 for crossbars
Rod combination	3-piece folding design
Height	from 1,590 to 4,025 mm

### Order No.

black 24640-009-55

### Accessories

### Page

CROSSBAR 213/9

237

CARRYING CASE 24611

233





TÜV type approved  
for loads up to 30 kg

**LIGHTING/SPEAKER STAND**

246/1	STARLINE
Weight	8.7 kg
Special features	steel extension tube; push-button system and hand crank avoid uncontrolled reverse motion; locking screw pro- vides additional safety; zinc die-cast connecting parts
Material	aluminum
Number of legs	3 pieces
Leg construction	tube legs with double cross braces
Height adjustment	hand crank with push-button system and locking screw
Max. load capacity	30 kg
Tube end(s)	diameter 35 mm, integrated threaded bush M10 for crossbars
Rod combination	2-piece folding design
Height	from 1,865 to 3,040 mm

**Order No.**

black 24610-009-55

High quality lighting stand for professional use. New die-cast zinc clamps and the larger aluminum leg tubing enhance safety. Height adjustment to any height is by means of a hand crank and push button system. The integrated M10 thread adaptor can be used to attach crossbars 213/9 and 21393.

Accessories	Page
CROSSBAR 213/9	237
CROSSBAR 21393	237
CARRYING CASE 24611	233



**CROSSBAR**

213/9	
Weight	2.14 kg
Special features	M10 x 40 mm bolt and washer included
Material	steel
Dimensions	1,260 x 40 x 20 mm
Takes up to	10 spot lights
Suitable for	M10 thread
Fits	246/1, 24630, 24640

**Order No.**

black 21390-000-55

**Accessories**

SCREW SET 21394

**Page**

237

**CROSSBAR**

21393	
Weight	2.92 kg
Special features	secured by locking screw; 4 screw fittings included
Material	steel
Dimensions	1,455 x 40 x 20 mm
Takes up to	10 spot lights
Suitable for	tube diameter 35 mm
Fits	246/1, 24630

**Order No.**

black 21393-070-55

**Accessories**

SCREW SET 21394

**Page**

237

**CROSSBAR**

24622	
Weight	0.65 kg
Special features	secured by locking screw
Material	aluminum
Max. load capacity	20 kg
Dimensions diameter	36 x 1,230 mm
Takes up to	8 spot lights
Suitable for	tube diameter 35 mm
Fits	24625, 24630

**Order No.**

black anodized 24622-000-35

**Accessories**

SCREW FITTING SET 24621

**Page**

237

**SIDE CROSSBAR**

24637	
Weight	0.6 kg
Material	aluminum
Dimensions diameter	36 x 665 mm
Takes up to	4 spot lights
Suitable for	tube diameter 35 mm
Fits	24630

**Order No.**

black 24637-000-55

**SCREW FITTING SET**

21394	
Weight	0.36 kg
Special features	for crossbars
Dimensions diameter	50 x 45 mm
Quantity	4 screw fittings
Fits	213/9, 21393

**Order No.**

black (unit: 4 pcs.) 21394-000-55

**SCREW FITTING SET**

24621	
Weight	0.3 kg
Dimensions diameter	54 x 51 mm
Quantity	4 screw fittings
Fits	24620, 24622

**Order No.**

black (unit: 4 pcs.) 24621-000-55





## TV PIN

**24516**

Weight	0.02 kg
Material	aluminum
Diameter	16 mm
Length	46.5 mm
Threaded connector	male thread M10 x 17 mm

**Order No.**

blank 24516-000-00

## TV PIN

**24518**

Weight	1.24 kg
Material	steel
Diameter	35 mm
Length	215 mm
Threaded connector	female thread M10 x 35 mm

**Order No.**

zinc-plated 24518-000-29

## TV PIN

**24519**

Weight	0.48 kg
Material	steel
Diameter	28 mm
Length	115 mm
Threaded connector	female thread M10 x 34 mm

**Order No.**

zinc-plated 24519-000-29



## REDUCER FLANGE

**24521**

Weight	0.48 kg
Special features	secured by locking screw
Material	steel
Function	to slip on stand
Suitable for tubing diameter of	35 mm
Diameter	40 mm
Length	100 mm

**Order No.**

black, M10 x 12 mm 24521-000-55  
 black, M6 x 18 mm 24521-060-55  
 black, M8 x 18 mm 24521-070-55  
 black, bolt  
 diameter 25 mm 24521-250-55  
 black, 3/8" x 12 mm 24521-300-55



## REDUCER FLANGE

**24528**

Weight	0.46 kg
Special features	secured by locking screw
Material	steel
Function	to slip on stand
Suitable for tubing diameter of	35 mm
Diameter	40 mm
Length	100 mm
Threaded connector	M10

**Order No.**

black 24528-000-55



## CONNECTION SLEEVE

**66350**

Weight	0.66 kg
Special features	for TV-pin diameter 28 mm; with threaded bolt M10 x 20 mm; T-bar locking screw
Material	steel
Function	to slip on stand
Suitable for tubing diameter of	35 mm
Diameter	40 mm
Length	249 mm
Threaded connector	M10

**Order No.**

black 66350-070-55





